

APPLIQUE AFFAIR

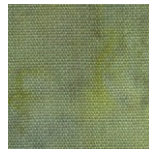
Month #10

BLOCK #19, #20, AND
TWO BORDER BLOCKS

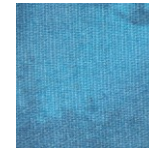
BLOCK #19



BACKGROUND



APPLIQUE
E & G



APPLIQUE
I & K



APPLIQUE
A



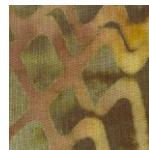
APPLIQUE
F & M



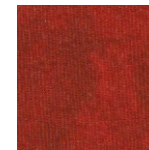
APPLIQUE
N & P



APPLIQUE
B & D



APPLIQUE
H, L, & Q



APPLIQUE
O



APPLIQUE
C & J



(800) 841-3901

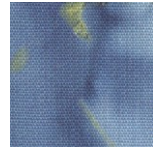
info@stitchinheaven.com

**APPLIQUE AFFAIR
MONTH #10**

BLOCK #20



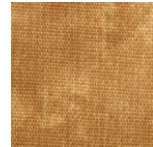
BACKGROUND



**APPLIQUE
D & E**



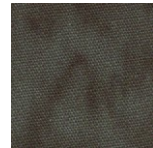
**APPLIQUE
A**



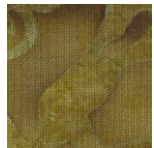
**APPLIQUE
F**



**APPLIQUE
B**



**APPLIQUE
G**



**APPLIQUE
C**



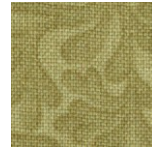
**APPLIQUE
H**



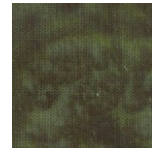
**APPLIQUE
I**

BORDER BLOCKS

**VARIOUS NEUTRALS
WERE USED FOR
BACKGROUNDS**



**APPLIQUE
A**



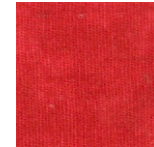
**APPLIQUE
B**



**APPLIQUE
C**



**APPLIQUE
D**



**APPLIQUE
E**



**APPLIQUE
F**

Appliqué H and Appliqué I
fabrics will be added into
your Month 11 package.