

# APPLIQUE AFFAIR 2008

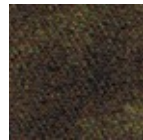
Month #9

## BLOCK #17, #18 & TWO BORDER BLOCKS

### BLOCK #17



BACKGROUND



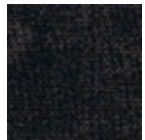
APPLIQUE  
E



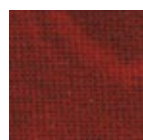
APPLIQUE  
A



APPLIQUE  
F



APPLIQUE  
B & H



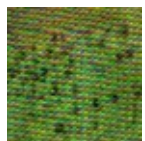
APPLIQUE  
G



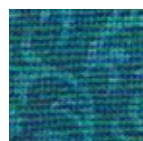
APPLIQUE  
C & I



APPLIQUE  
J



APPLIQUE  
D



APPLIQUE  
K

### BLOCK #18



BACKGROUND



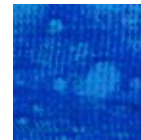
APPLIQUE  
G & I



APPLIQUE  
A



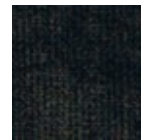
APPLIQUE  
H & K



APPLIQUE  
B, L, M, & N



APPLIQUE  
J



APPLIQUE  
C, D, E, & F



APPLIQUE  
O



(800) 841-3901

info@stitchinheaven.com

**APPLIQUE AFFAIR 2008  
MONTH #9  
BORDER BLOCKS**



**APPLIQUE  
A**



**APPLIQUE  
D**

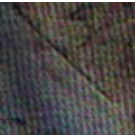
**VARIOUS  
NEUTRALS  
WERE USED  
FOR THIS  
MONTH'S  
BACKGROUNDS**



**APPLIQUE  
B**



**APPLIQUE  
E**



**APPLIQUE  
C**



**APPLIQUE  
F**