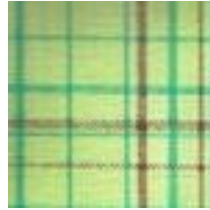


**AUNT MILLIE'S GARDEN BOM
MONTH #1 JULY 2008
ORANGE FLOWERS**



**FAT QUARTER
FOR BACK-
GROUND**



**#1, #2, #19
LARGE LEAVES
& SMALL CENTER
CIRCLE 8" X 6"**



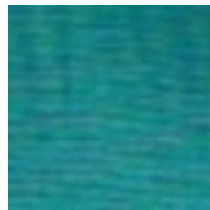
**LARGE FAN
FLRS
#11—#15 ON
PATTERN
12" x 12"**



**SMALL LEAVES
#3, #4
6" X 6"**



**SUB (FOR 16)
#11—#15 ON
PATTERN/LG
FLR**



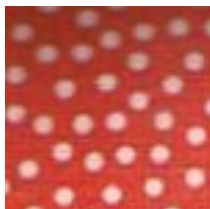
**#10, #16 CIRCLES
ON FLOWERS &
CENTER CIRCLE
#10, #16, #18**



**SMALL FLOWERS
#7—#9
8" X 10"**



STEMS



**FAN BLADES
ON CENTER
CIRCLE**