

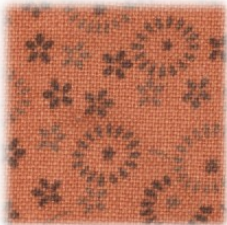
# HAPPY HAUNTING 2010

Month #9  
JUNE

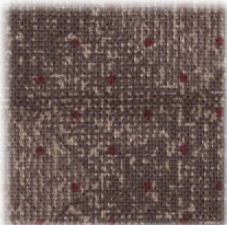
WITCHES BOOT W/CANDY  
Block #9



**LOLIPOP #23**  
**CANDY WRAP #10,11**  
**CANDY CORN MIDDLE**  
**#17-21**



**CANDIES #13,25**



**BOOT #26**



**FLAG #8**



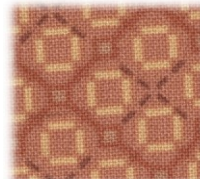
**LOLLIPOP #22**



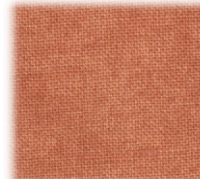
**CANDY MIDDLE #16**



**CANDY WRAPPER ENDS #14,15**



**CANDY #24**



**FLAG BALL #9**  
**CANDY CORN BOTTOM #17-21**



(800) 841-3901  
info@stitchinheaven.com

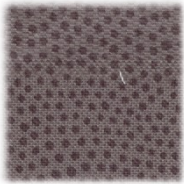
# HAPPY HAUNTING 2011

Month #9

JUNE

WITCH'S BOOT W/CANDY

Block #9



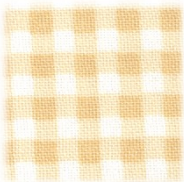
**BACKGROUND**



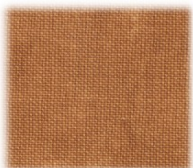
**CANDY #12**



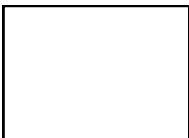
**BOOT LINING #3**



**STRAW**



**BUCKLE #28**



**CANDY CORN TOP #17-21**



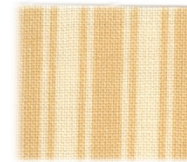
**STRAW #4**



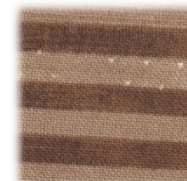
**STRAW #5**



**FLAGPOLE #9**



**LOLIPOP**



**HEEL, TOE, TONGUE  
#1, 2, 27**



(800) 841-3901

info@stitchinheaven.com