

## HEARTLAND 2009

May Month #3

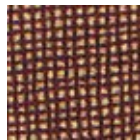
Squirrel  
Block #5



**Background  
Fabric**



**Black  
Eye and Nose  
#23, #24**



**Brown check  
Acorn  
#16, 19, 22**



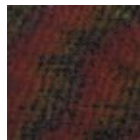
**Light Brown  
Acorn  
#15, 18, 21**



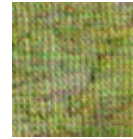
**Light Gray  
Squirrel  
#6, 14, 17**



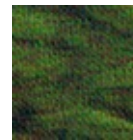
**Dark Gray  
Squirrel  
#11, 12, 13**



**Solid Dark Brown  
Stems  
#3, 7, 9, 20**



**Light Green  
Leaf  
#5**



**Medium Green  
Leaf  
#2**



**Dark Green  
Leaf  
#10**



**Light Yellow  
Leaf  
#4**



**Medium Yellow/Gold  
Leaf  
#8**

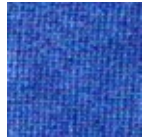


**Dark Orange/Gold  
Leaf  
#1**

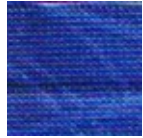


(800) 841-3901  
info@stitchinheaven.com

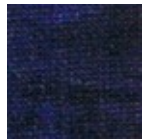
**MAGNOLIA WREATH  
Block #6**



**Lightest Blue  
Flower  
#32, 45**



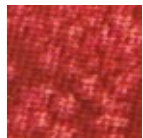
**Medium Blue  
Flower  
#4, 8**



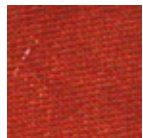
**Darkest Blue  
Flower  
#1, 2, 5, 6, 28, 29, 41, 42**



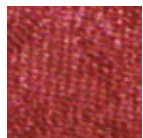
**Lightest Peach Print  
Bird—Chest  
#56, 64**



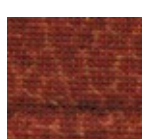
**Red with Crystal Design  
Bird—Tail  
#54, 62**



**Rust Solid  
Bird—Back Wing & Head  
#57, 60, 65, 68**



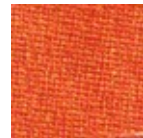
**Rust with Texture  
Bird—Wing  
#58, 66**



**Brown Speckled  
Bird—Belly  
#55, 63**



**Brown dotted swirl print  
Bird Neck Ring  
# 61, 69**



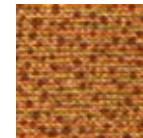
**Solid Orange  
Bird Beak  
#59, 67**



**Background Fabric**



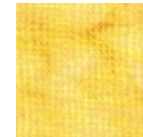
**Brown Solid  
Flower Centers  
#27, 39, 52**



**Light Brown with Specks  
Flower Center Ring  
#26**



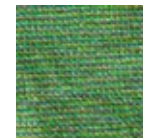
**Lightest Yellow  
Flowers  
#24, 40, 53**



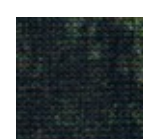
**Medium Yellow Batik  
Flowers  
#22, 23, 25, 50, 51**



**Yellow/Gold  
Flowers  
#21, 36, 49**



**Light Green  
Leaves  
#10, 25, 34, 46**



**Dark Green  
Stems #3,7,13,18,31,35,44,48  
Leaves #6,9,11,12,14,17, 19,  
20,30,33,43,47**