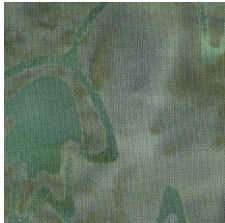


STARS OVER BALI SKIES

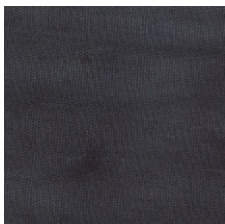
Month # 9

SARAH'S CHOICE AND RIGHT HAND OF FRIENDSHIP

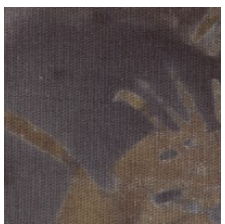
SARAH'S CHOICE



GREEN
*TEAL



BLUE
*LAVENDER



DARK BROWN
*BROWN LEAF
PRINT

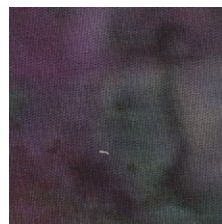
RIGHT HAND OF FRIENDSHIP



DARK PURPLE
*BROWN PRINT
BACKGROUND



PINK/PURPLE
*ORANGE



MULTICOLOR
*GREEN



SETTING SQUARES

*COLOR/NAME USED IN
PATTERN