

# TINY TOWN

Month # 9

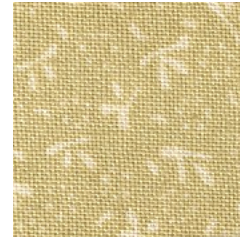
Block # 9



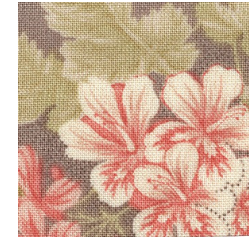
TOPIARY &  
SCHOOL  
BACKGROUND



HEART,  
LIBRARY  
TRIM, DOOR,  
SCHOOL  
FRONT,  
BELL TOWER  
SWING, BALL



BOTTOM  
STRIP 2 X 14  
GRASS  
(2 X 22)



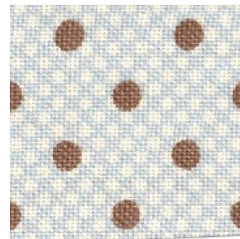
LIBRARY  
ROOF



SIDE STRIPS  
(4 X 6)  
SWING & TREE  
BACKGROUND  
(6 X 9)



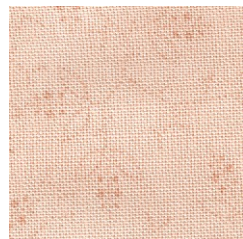
POT,  
SCHOOL  
SIDE



LIBRARY  
BACKGROUND



LIBRARY  
DOOR



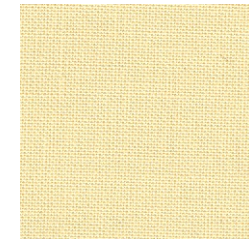
TOP & BOTTOM  
STRIPS,  
LIBRARY  
WINDOWS



LEAVES,  
SCHOOL  
DOOR TRIM  
(3 X 7)  
GRASS  
(2 X 22)



LIBRARY



SIGNS

**TINY TOWN  
MONTH # BLOCK # 9**



SWING SET,  
POLE



GRASS



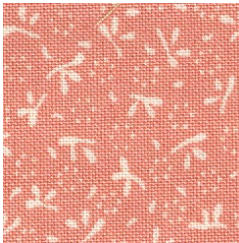
INSIDE  
BELL TOWER



TREE



SCHOOL ROOF



SCHOOL DOOR,  
INNER BORDER



TREE TRUNK



SCHOOL TRIM,  
BELL



OUTER BORDER



GRASS



SCHOOL  
WINDOWS



BINDING